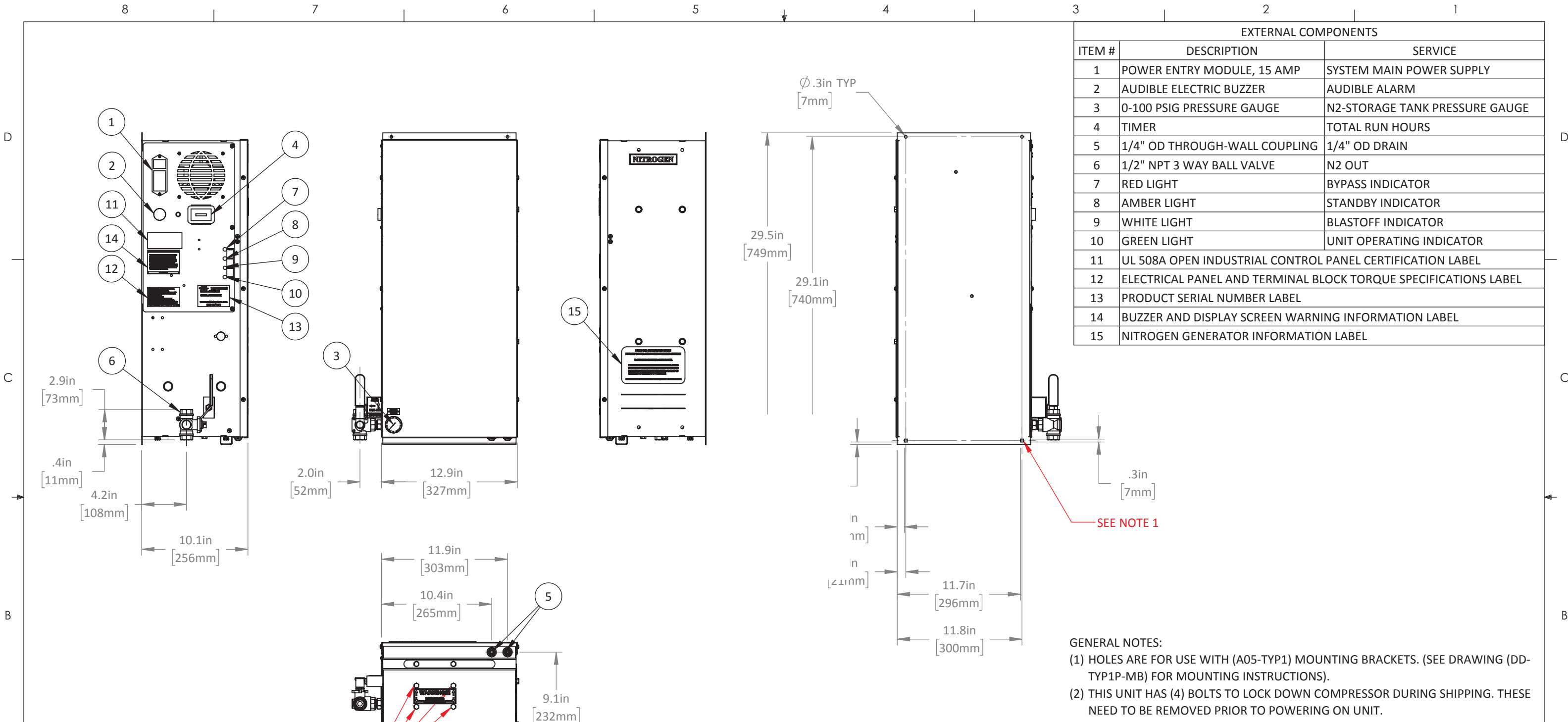


GENERAL NOTES:  
 (1) ALL CONNECTIONS ARE 1/2" NPT F UNLESS OTHERWISE SPECIFIED.  
 (2) SHOULD THE HANDLE BE IN THE OUTWARD POSITION, THE GENERATOR WILL BE BYPASSED BY AIR. THIS WILL ILLUMINATE A RED LIGHT ON THE GENERATOR (AND SIGNAL A LOCAL SUPERVISORY ALARM IF CONNECTED TO THE BUILDING MONITORING PANEL) UNTIL THE HANDLE IS TURNED TO THE UPWARD POSITION. THE UPWARD POSITION RESUMES NORMAL OPERATION ALLOWING NITROGEN TO BE MAINTAINED WITHIN THE DRY OR PRE-ACTION FIRE SPRINKLER SYSTEM (NOTE: DEVICE IS ONLINE TO PREVENT SPRINKLER PIPE CORROSION).

-							MATERIAL:		TYP1P, GENERAL ARRANGEMENT			DRAWN:	APPROVED:	
-							FINISH:					PJS	JVN	
-							WEIGHT:		PROJECT NAME:			DATE:	DATE:	
00	-	-	RELEASE FOR CUSTOMER REFERENCE	01/11/18	PJS	MRT	PROJECT NAME:		CUSTOMER INSTALLATIONS			SCALE:	SHEET:	
REV	TASK#	SHEET	DESCRIPTION	DATE	DRAWN	APPR.	UNLESS OTHERWISE SPECIFIED DIMENSIONS ARE IN INCHES		NUMBER:			1:12	1 OF 1	
REVISIONS: ONLY THE LATEST 3 REVISIONS WILL BE SHOWN. OLDER REVISIONS CONSOLIDATED AND FILED.						PROPRIETARY AND CONFIDENTIAL THE INFORMATION CONTAINED IN THIS DRAWING IS THE SOLE PROPERTY OF SOUTH-TEK SYSTEMS. ANY REPRODUCTION IN PART OR AS A WHOLE WITHOUT THE WRITTEN PERMISSION OF SOUTH-TEK SYSTEMS IS PROHIBITED.		ANGLES ±.5° ±1 ±.2 ±.03 ±.005 ±1/16 ±1/8		GA-TYP1P-FPS-A			REVISION:	00



**GENERAL NOTES:**

(1) HOLES ARE FOR USE WITH (A05-TYP1) MOUNTING BRACKETS. (SEE DRAWING (DD-TYP1P-MB) FOR MOUNTING INSTRUCTIONS).

(2) THIS UNIT HAS (4) BOLTS TO LOCK DOWN COMPRESSOR DURING SHIPPING. THESE NEED TO BE REMOVED PRIOR TO POWERING ON UNIT.

SEE NOTE 2

SEE NOTE 1

(FRP-007) FILTER REPLACEMENT KIT		
STS PART #	DESCRIPTION	QTY
900-135	PRE COMPRESSOR FILTER	1
900-137-MB	PARTICULATE FILTER ELEMENT	1
900-140-MB	COALESCING FILTER ELEMENT	1
120-020-E	REPLACEMENT O-RINGS	2

DESIGN DATA	
N2 OUT PRESSURE	UP TO 70 PSI
ELECTRICAL OPTION 1	110V / 60Hz / 1PHASE, 4.3 AMPS
ELECTRICAL OPTION 2	240V / 50Hz / 1PHASE, 5 AMPS
NOISE LEVEL (dba)	<60
WEIGHT	84 LBS

REV	TASK#	SHEET	DESCRIPTION	DATE	DRAWN	APPR.
-	-	-	-	-	-	-
00	-	-	RELEASE FOR CUSTOMER REFERENCE	10/16/17	PJS	MRT

REVISIONS: ONLY THE LATEST 3 REVISIONS WILL BE SHOWN. OLDER REVISIONS CONSOLIDATED AND FILED.

**South-Tek Systems**

PROPRIETARY AND CONFIDENTIAL  
THE INFORMATION CONTAINED IN THIS DRAWING IS THE SOLE PROPERTY OF SOUTH-TEK SYSTEMS. ANY REPRODUCTION IN PART OR AS A WHOLE WITHOUT THE WRITTEN PERMISSION OF SOUTH-TEK SYSTEMS IS PROHIBITED.

MATERIAL: \_\_\_\_\_

FINISH: \_\_\_\_\_

WEIGHT: \_\_\_\_\_ PROJECT NAME: \_\_\_\_\_

NUMBER: **DD-TYP1P-M-FPS**

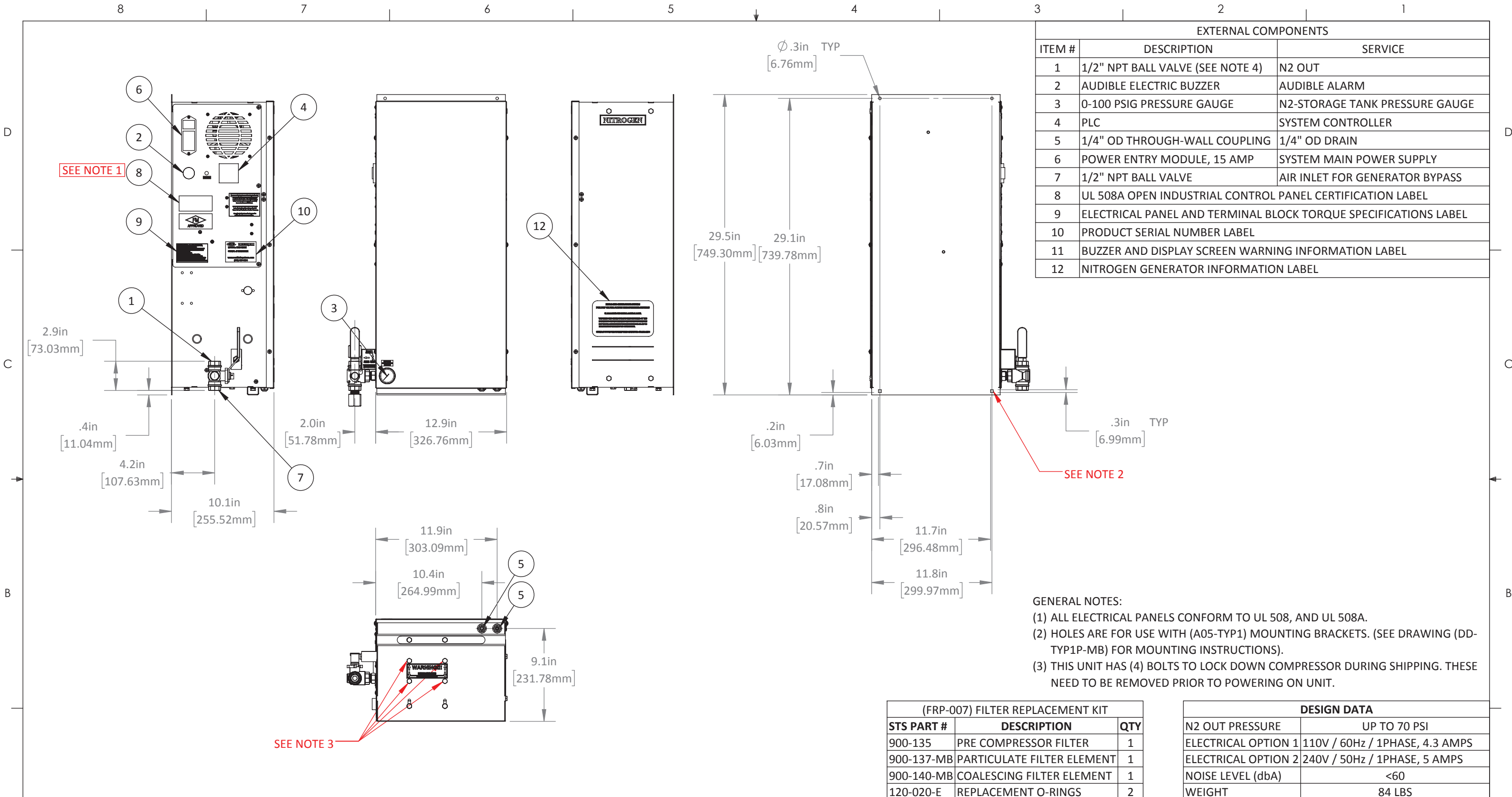
APPROVED: **FPS-500 DESIGN DATA AND DIMENSIONS**

DATE: 10/16/17

SCALE: 1:9

SHEET: 1 OF 1

REVISION: **00**




**GENERAL NOTES:**  
 (1) ALL ELECTRICAL PANELS CONFORM TO UL 508, AND UL 508A.  
 (2) HOLES ARE FOR USE WITH (A05-TYP1) MOUNTING BRACKETS. (SEE DRAWING (DD-TYP1P-MB) FOR MOUNTING INSTRUCTIONS).  
 (3) THIS UNIT HAS (4) BOLTS TO LOCK DOWN COMPRESSOR DURING SHIPPING. THESE NEED TO BE REMOVED PRIOR TO POWERING ON UNIT.

(FRP-007) FILTER REPLACEMENT KIT		
STS PART #	DESCRIPTION	QTY
900-135	PRE COMPRESSOR FILTER	1
900-137-MB	PARTICULATE FILTER ELEMENT	1
900-140-MB	COALESCING FILTER ELEMENT	1
120-020-E	REPLACEMENT O-RINGS	2

DESIGN DATA	
N2 OUT PRESSURE	UP TO 70 PSI
ELECTRICAL OPTION 1	110V / 60Hz / 1PHASE, 4.3 AMPS
ELECTRICAL OPTION 2	240V / 50Hz / 1PHASE, 5 AMPS
NOISE LEVEL (dba)	<60
WEIGHT	84 LBS

REV	TASK#	SHEET	DESCRIPTION	DATE	DRAWN	APPR.
04	RD066	-	FPS-900 DESIGN DATA	09/22/17	PJS	MRT
03	10173	-	ADDED DUAL DIMENSIONS	11/11/16	PJS	JVN
02	-	-	ADD NEW ELECTRICAL OPTION TO DESIGN DATA CHART	02/02/16	PJS	JVN

REVISIONS: ONLY THE LATEST 3 REVISIONS WILL BE SHOWN. OLDER REVISIONS CONSOLIDATED AND FILED.



**South-Tek Systems**

**PROPRIETARY AND CONFIDENTIAL**  
 THE INFORMATION CONTAINED IN THIS DRAWING IS THE SOLE PROPERTY OF SOUTH-TEK SYSTEMS. ANY REPRODUCTION IN PART OR AS A WHOLE WITHOUT THE WRITTEN PERMISSION OF SOUTH-TEK SYSTEMS IS PROHIBITED.

**MATERIAL:** \_\_\_\_\_  
**FINISH:** \_\_\_\_\_  
**WEIGHT:** \_\_\_\_\_ **PROJECT NAME:** \_\_\_\_\_

**FPS-900 DESIGN DATA AND DIMENSIONS**

**NUMBER:** **DD-TYP1P-FPS-900**

**REVISION:** **00**

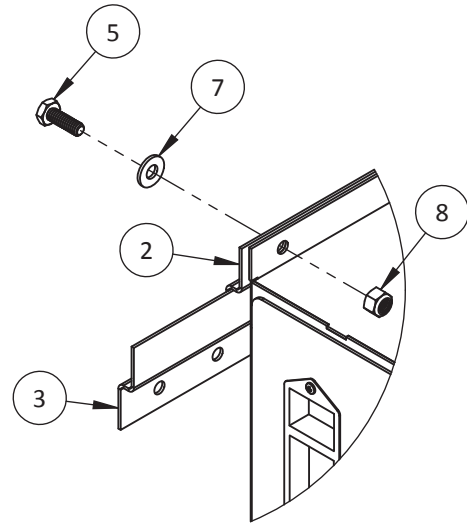
UNLESS OTHERWISE SPECIFIED DIMENSIONS ARE IN INCHES

ANGLES	X.	.X	.XX	.XXX	X/X<10'	X/X>10'
±.5°	±1	±.2	±.03	±.005	±1/16	±1/8

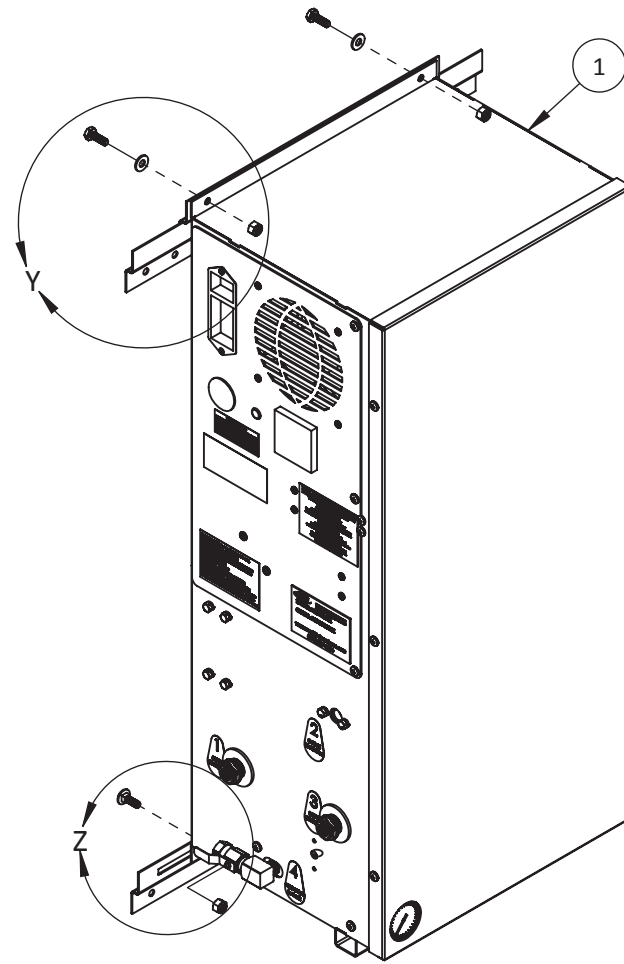
SIZE: B SCALE: 1:9 SHEET: 1 OF 1

# WALL MOUNTING BRACKET

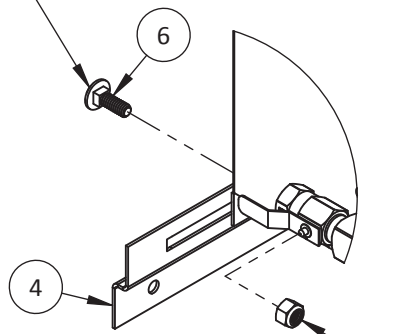
ITEM #	STS PART #	DESCRIPTION	QTY.
1	TYP1P UNIT	TYP1P UNIT SHOWN	1
2	800-133	S-100/200 MOUNTING BRACKET	1
3	800-134-B	TYP1 (18IN) MOUNTING BRACKET	1
4	800-129	100/200 LOWER WALL MOUNT BRACKET	1
5	002-382	.250"-20 x 0.750" HHCS	2
6	REFERENCE	0.250" -20 x 0.750" CARRIAGE BOLT	2
7	REFERENCE	0.250" FLAT WASHER	2
8	REFERENCE	0.250" NYLOCK NUT	4



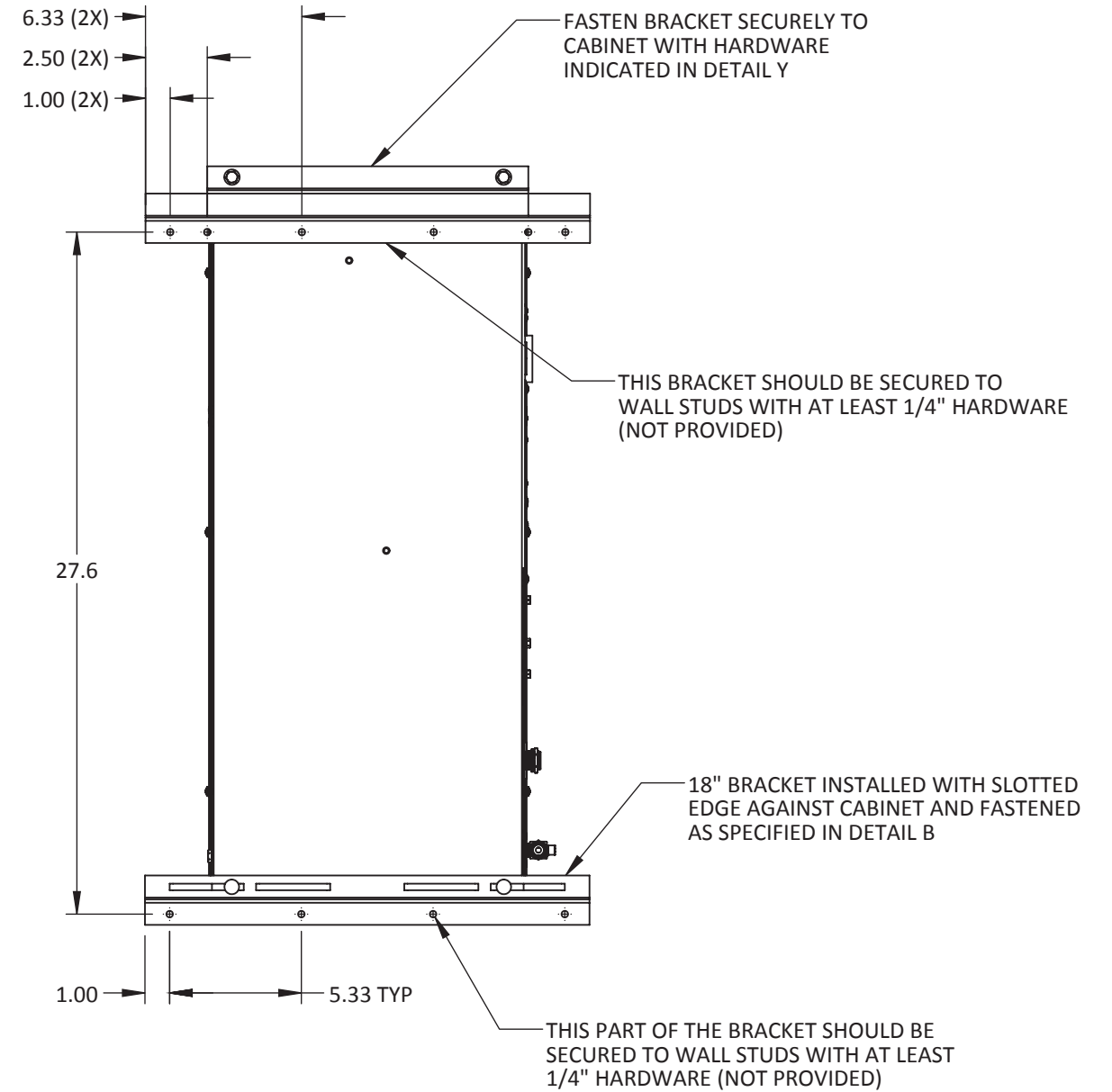
DETAIL Y  
SCALE 2 : 7



CARRIAGE BOLT MUST BE  
INSTALLED FROM THE BACK  
SIDE OF THE BRACKET



DETAIL Z  
SCALE 2 : 7



REV	TASK#	SHEET	DESCRIPTION	DATE	DRAWN	APPR.
-	-	-	-	-	-	-
00	-	-	RELEASE TO SALES	09/08/17	SRG	MRT

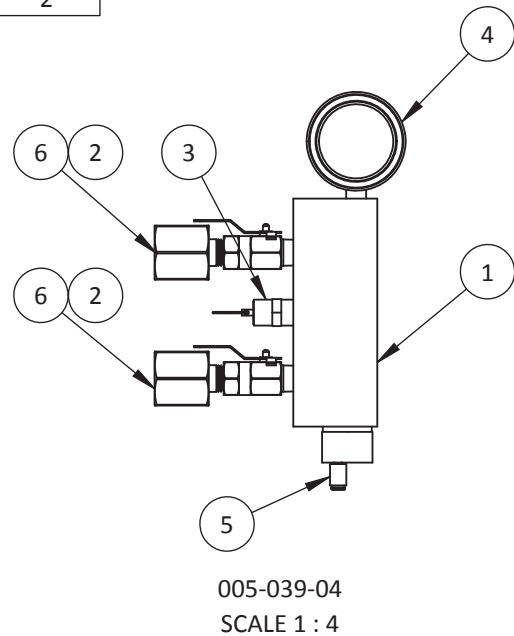
REVISIONS: ONLY THE LATEST 3 REVISIONS WILL BE SHOWN. OLDER REVISIONS CONSOLIDATED AND FILED.



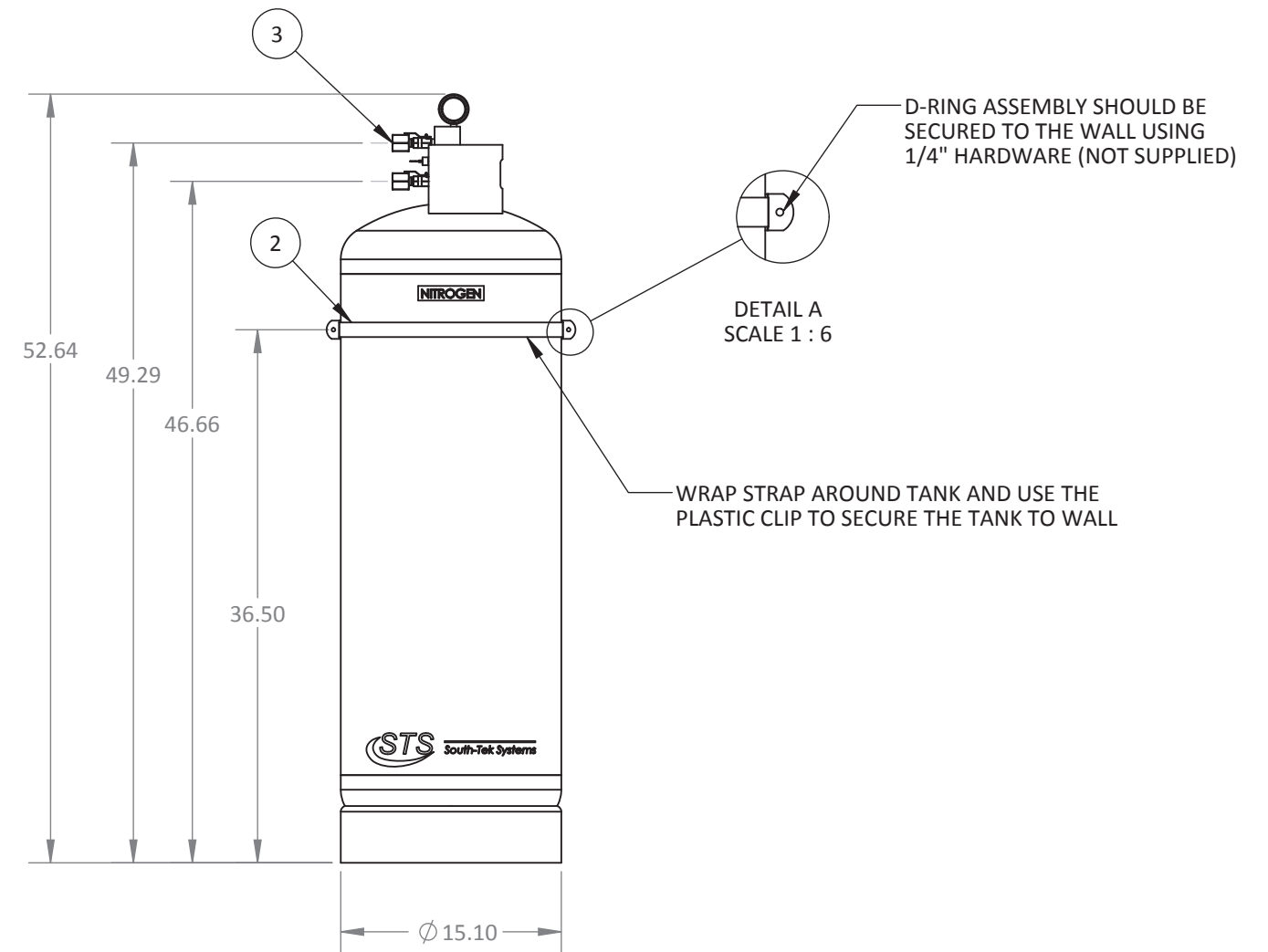
**PROPRIETARY AND CONFIDENTIAL**  
THE INFORMATION CONTAINED IN THIS DRAWING IS THE SOLE  
PROPERTY OF SOUTH-TEK SYSTEMS. ANY REPRODUCTION IN  
PART OR AS A WHOLE WITHOUT THE WRITTEN PERMISSION  
OF SOUTH-TEK SYSTEMS IS PROHIBITED.

MATERIAL:	TYP1P MOUNTING BRACKETS INSTALLATION		DRAWN: SRG	APPROVED: XXXXX
FINISH:			DATE: 09/08/17	DATE: 09/22/17
WEIGHT:	PROJECT NAME:	SIZE: B	SCALE: 1:7	SHEET: 2 OF 2
UNLESS OTHERWISE SPECIFIED DIMENSIONS ARE IN INCHES		NUMBER: <b>DD-TYP1P-MB</b>		REVISION: <b>00</b>
ANGLES	X.	.X	.XX	.XXX
±.5°	±1	±.2	±.03	±.005
				±1/16
				±1/8

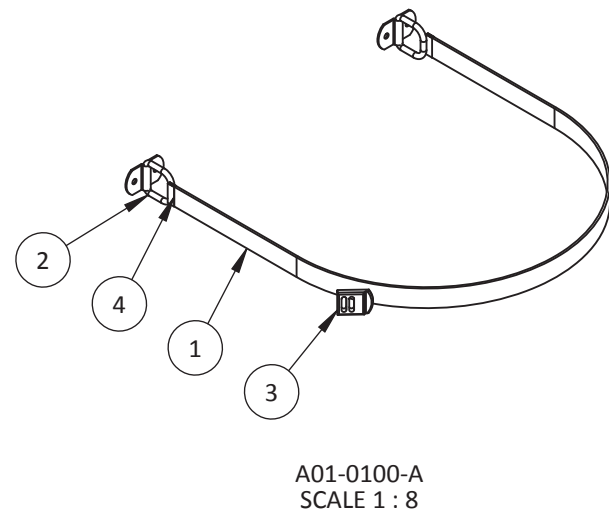
005-039-04, TANK MANIFOLD ASSY, ITEMS 2-6 IS PART OF ASSEMBLY 005-039			
ITEM #	STS PART #	DESCRIPTION	QTY.
1	800-245-A	Tank Manifold	1
2	124-308	0.250" NPT M X F MINI BALL VALVE, BRASS	2
3	124-335-A	0.250" SAFETY RELIEF, 115 PSI, UCI, 73 CFM	1
4	124-125	0.250" NPT X 02.000" O-160 PSIG, BM	1
5	001-573	10-32 UNF X 0.250" OD PTC STRAIGHT, LEGRIS	1
6	524-218	0.500" NPT F X 0.250" NPT M REDUCER, BRASS	2



ITEM #	STS PART #	DESCRIPTION	QTY.
1	800-111-FPS	100# Red Tank with Label	1
2	A01-0100-A	Tank Strap Assembly	1
3	A01-0100-S-A	Tank Manifold with 0.500" Nozzles	1



A01-0100-A, 100# TANK STRAP ASSEMBLY			
ITEM #	STS PART #	DESCRIPTION	QTY.
1	800-155	Tank Strap	1
2	800-157	D-RING ASSEMBLY	2
3	800-154	LIGHT DUTY PLASTIC BUCKLE	1
4	800-156	FINISHING TIP	2



(800-111) NITROGEN STORAGE TANK DESIGN DATA	
VOLUME	28 GALLONS
WEIGHT	75 LBS

REV	TASK#	SHEET	DESCRIPTION	DATE	DRAWN	APPR.
02	10121	-	REPLACED A01-0100-S-A WITH 005-039-04 AND UPDATED VIEWS	01/13/2015	PJS	JVN
01	-	-	UPDATED TITLE BLOCK AND TEXT FORMAT	07/29/2015	PJS	JVN
00	-	-	INITIAL DRAWING RELEASE	12/03/2014	PJS	JVN

**South-Tek Systems**

**PROPRIETARY AND CONFIDENTIAL**  
THE INFORMATION CONTAINED IN THIS DRAWING IS THE SOLE PROPERTY OF SOUTH-TEK SYSTEMS. ANY REPRODUCTION IN PART OR AS A WHOLE WITHOUT THE WRITTEN PERMISSION OF SOUTH-TEK SYSTEMS IS PROHIBITED.

**28 GALLON (100#) TANK ASSEMBLY DESIGN DATA**

MATERIAL: \_\_\_\_\_  
FINISH: \_\_\_\_\_  
WEIGHT: \_\_\_\_\_ PROJECT NAME: NITROGEN STORAGE TANK DESIGN DATA  
SIZE: B

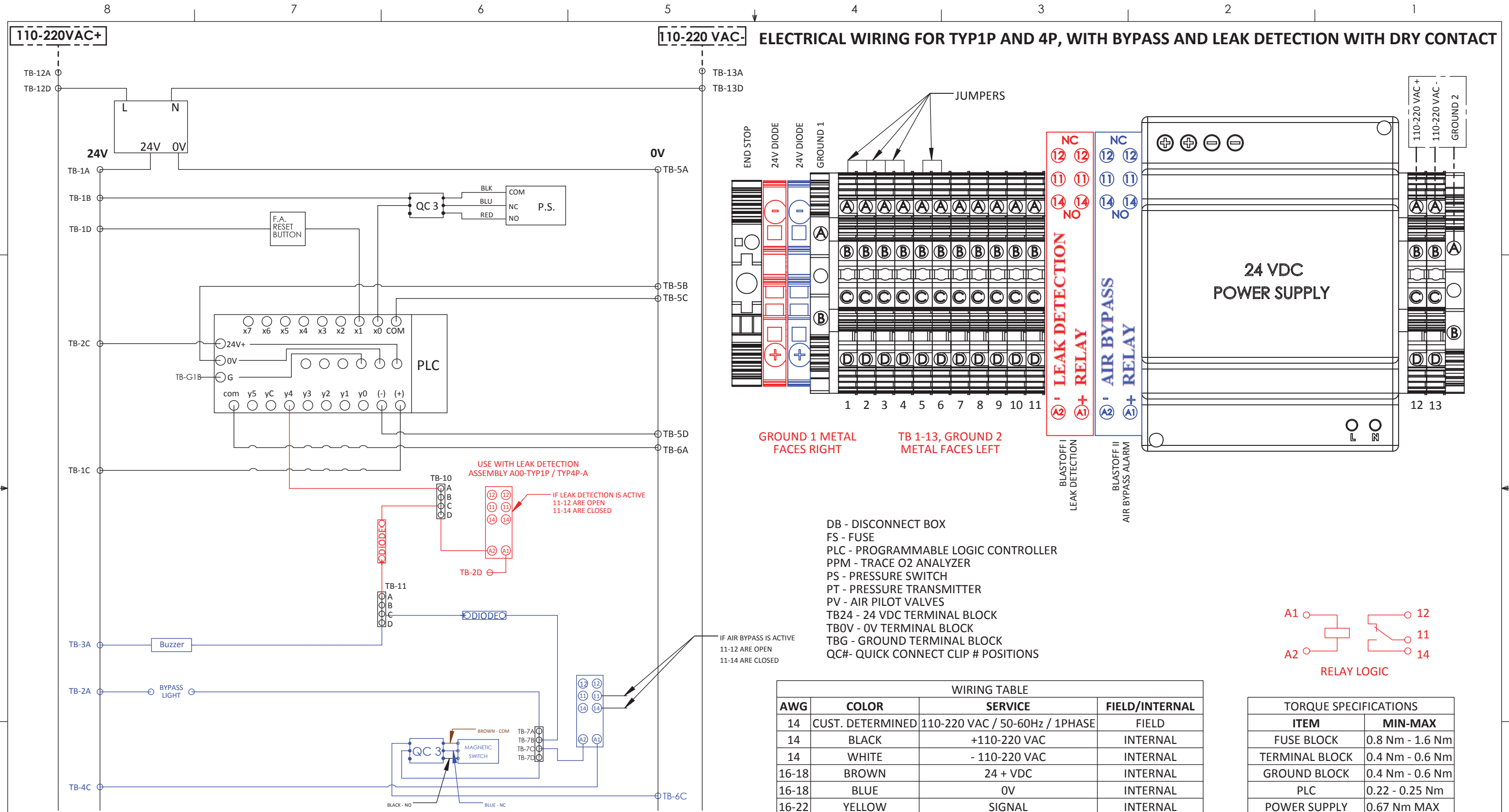
UNLESS OTHERWISE SPECIFIED DIMENSIONS ARE IN INCHES

ANGLES	X.	.X	.XX	.XXX	X/X<10'	X/X>10'
±.5°	±1	±.2	±.03	±.005	±1/16	±1/8

NUMBER: **DD-A01-0100-04-04**

REVISION: **01**

REVISIONS: ONLY THE LATEST 3 REVISIONS WILL BE SHOWN. OLDER REVISIONS CONSOLIDATED AND FILED.



REV	TASK#	SHEET	DESCRIPTION	DATE	DRAWN	APPR.
03	10231	-	ADDED ELECTRICAL FOR UNITS WITHOUT COMPRESSOR TO SHEET 3	08/04/17	PJS	MRT
02	10169	-	ADDED ELECTRICAL WIRING FOR CP-4P-FF-HP, NOW 04CPI-HP	11/10/16	PJS	MRT
01	10167	-	ELECTRICAL RATING UPDATE	09/20/16	MRT	MRT

**REVISIONS: ONLY THE LATEST 3 REVISIONS WILL BE SHOWN. OLDER REVISIONS CONSOLIDATED AND FILED.**

**South-Tek Systems**

**PROPRIETARY AND CONFIDENTIAL**  
 THE INFORMATION CONTAINED IN THIS DRAWING IS THE SOLE PROPERTY OF SOUTH-TEK SYSTEMS. ANY REPRODUCTION IN PART OR AS A WHOLE WITHOUT THE WRITTEN PERMISSION OF SOUTH-TEK SYSTEMS IS PROHIBITED.

**MATERIAL:** \_\_\_\_\_  
**FINISH:** \_\_\_\_\_  
**WEIGHT:** \_\_\_\_\_ **PROJECT NAME:** \_\_\_\_\_

**TYP1P AND TYP4P ELECTRICAL SCHEMATIC**

**UNLESS OTHERWISE SPECIFIED DIMENSIONS ARE IN INCHES**

ANGLES	X.	.X	.XX	.XXX	X/X<10'	X/X>10'
±.5°	±1	±.2	±.03	±.005	±1/16	±1/8

**NUMBER:** \_\_\_\_\_ **SIZE:** B **SCALE:** 1:1 **SHEET:** 5 OF 6

**REVISION:** \_\_\_\_\_ **03**

**APPROVED:** \_\_\_\_\_ **DATE:** 07/18/16

**DATE:** 07/18/16

**ES-TYP1P-4P**